



TOHOKU UNIVERSITY GUIDE

For Prospective International Students

2018-2019

TOHOKU UNIVERSITY GUIDE
For Prospective International Students
2018-2019

Global Learning Center / Student Exchange Division
Education and Student Support Department Tohoku University
41 Kawauchi, Aoba-ku Sendai, Miyagi 980-8576 JAPAN
<http://www.insc.tohoku.ac.jp/>

東北大学 グローバルラーニングセンター／教育・学生支援部留学生課
〒980-8576 宮城県仙台市青葉区川内41
<http://www.insc.tohoku.ac.jp/>

東北大学 留学案内 2018-2019

Tohoku University, Creating Global Excellence

Over more than a century of history, Tohoku University's tradition of Research First, philosophy of Open Doors and ethos of Practice-Oriented Research and Education have produced excellent graduates, generated numerous research achievements and contributed to the development of a **peaceful and just society**.

Today, the world embarks upon a new global age, characterized by the globalization of the economy, the movement of people, rapid advances in information technology and the dissemination of knowledge. In times such as these, our university must continue its endeavors to create new value, of course in Japan, but also with the intent of contributing significantly to the **stability and development of the international community**.

Tohoku University therefore wishes to be an international hub where talented students and researchers can **"gather, learn and create."** They will rise to face various global changes and challenges and contribute to the development of the world and Japan. Tohoku University will continue to pave the way for societal paradigm shifts, conduct excellent education and research to **take the initiative in the global age** and maintain its status as a world-renowned university.

DATA

About Tohoku University
As of November 1, 2017

Total number of students
学生数(正規課程在籍者)

17,896

Undergraduate Students
学部生

10,961

Graduate Students
大学院生

6,935

Faculty
教員

3,156

International Students
外国人留学生

2,217

Partner Institutions
協定大学・機関

213

Library Collection
図書館蔵書

4,109,574
volumes

(As of May 1, 2017)



Why Tohoku University?

With its location in the green environment of the city of Sendai in northeastern Japan, Tohoku University has been offering academic excellence for over a century. It has long enjoyed the reputation of being one of the most liberal universities in the country as well as an institution that places a particularly strong emphasis on leading-edge research.



Open Institution

Since its foundation in 1907 as Japan's third national university, Tohoku University has been open to diverse talents and values: Tohoku University was the first Japanese university to accept female and international students over a hundred years ago and this inclusive tradition certainly continues today. Currently, around 2,000 international students from some 80 countries and territories are enrolled, creating a dynamic multi-cultural learning atmosphere on the campus. Tohoku University's emphasis on openness and equality means that we value students and academics with diverse backgrounds and welcome them as an integral part of our university community.

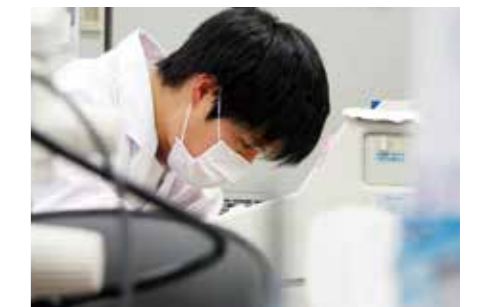
Study Environment

About 18,000 students are currently enrolled in 10 undergraduate departments and 15 graduate schools. Tohoku University boasts about 3,000 highly engaged faculty members, who actively interact with students in classrooms and research laboratories. A student-to-faculty ratio of 6:1 enables us to offer a personalized learning environment with special emphasis on research. On our lively campus, surrounded by nature, students not only strive for academic excellence, but achieve personal growth and prepare to become future leaders in every endeavor they will pursue through various extracurricular and social activities.



Cutting-Edge Research

Strong emphasis on quality research has always been our tradition. From fundamental discoveries to large-scale practical applications for everyday life, Tohoku University's research outcomes have deeply impacted our way of thinking and our way of living. Several recent world university rankings have recognized Tohoku University's research strength and competitiveness in physics, chemistry, materials science and engineering and many other fields. In this advantageous setting, students have unparalleled learning and research experiences, enabling them to acquire scientific skills through classroom teaching by our world-class research faculty as well as actual laboratory activities by students themselves.



Social and Community Role

"Practice-Oriented Research and Education" has long been one of the core values of Tohoku University, whereby the fruits of leading-edge research are put to practical use for the benefit of society and toward improving living standards. In keeping with the Open Door policy, various facilities of Tohoku University are available to the public. The university actively supports mid-career education and maintains community involvement through science cafés, international festivals, delivery classes, providing classroom experience and promoting lifelong learning.



Reconstruction Action

Tohoku University's commitment to its community role was demonstrated in the aftermath of the Great East Japan Earthquake of March 11, 2011. Tohoku University was one of the institutes of higher education at the center of the disaster area and the university has undertaken considerable efforts toward reconstruction and revitalization of the local region. The focus of these endeavors is on establishing new industries through close collaboration with industry and government agencies so as to boost employment and invigorate the Tohoku region. These efforts are in turn serving as a stimulus to the Japanese economy as a whole.



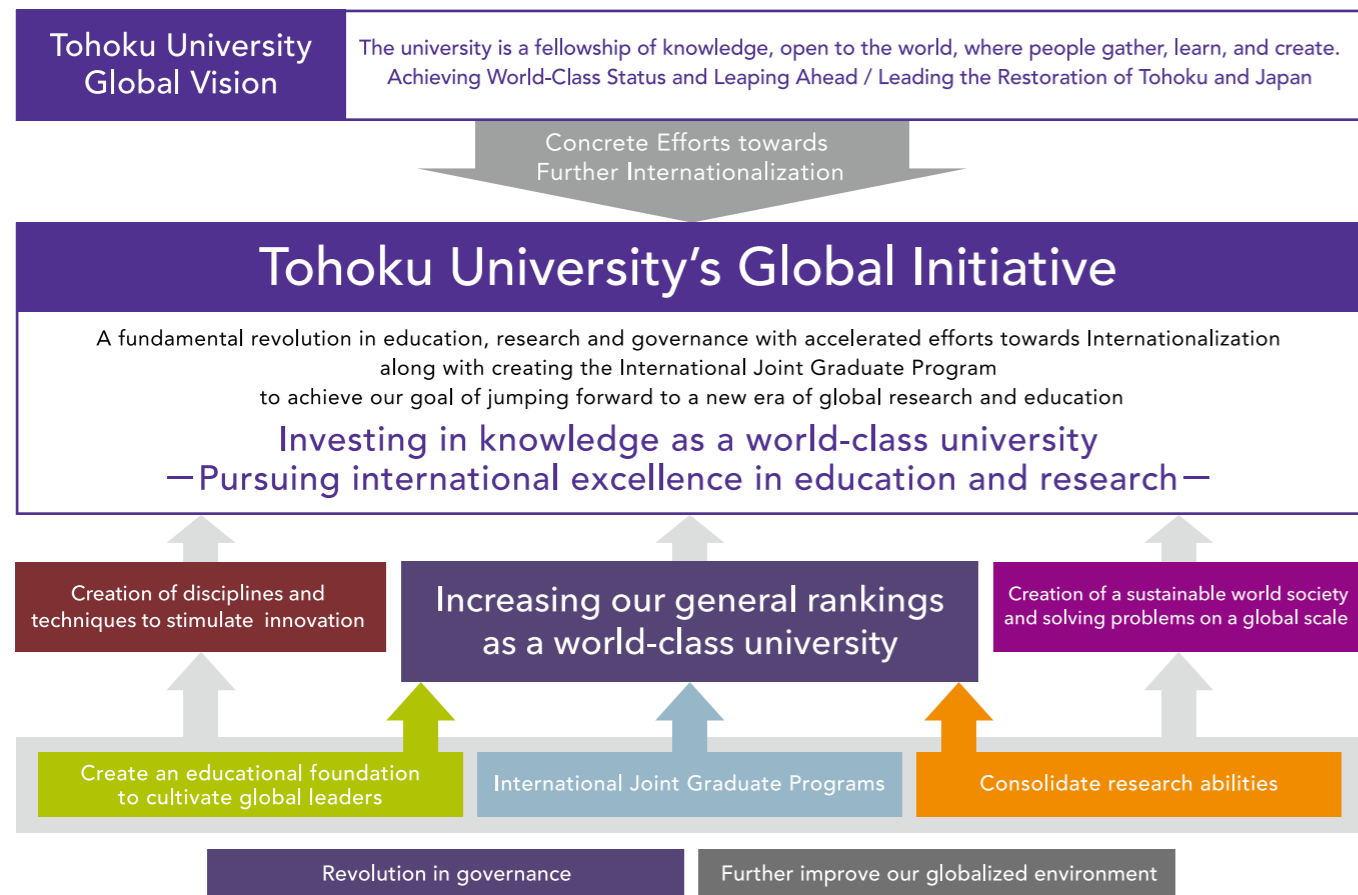
MEXT Top Global University Project

Tohoku University has been selected for the FY2014 Top Global University Project, a higher education reform initiative launched by Japan's Ministry of Education, Culture, Sports, Science and Technology (MEXT).

The MEXT program aims to raise Japan's global competitiveness in higher education by supporting internationalization and reform efforts at select institutions. Tohoku University's reform initiative is called "Tohoku University's Global Initiative" and is categorized as "Type A: Top Type" in the Top Global University Project.

Under this framework, we intend to further accelerate the initiatives we have undertaken with the "Global 30 Project" and the "Go Global Japan Project" to create a new global education. Further, based upon this new global education, we aim to form strong partnerships with overseas universities, with the goal of entering the world's Top Ten Ranking in the fields of Spintronics, Materials Science, Cosmological Physics, Earth Science, and Mechanical Systems as well as pushing for developments in the new disciplines of Data Science, Life Sciences, and Disaster Reduction/Safety Science, and Japanese Studies founding the International Joint Graduate Program in a total of nine fields. Additionally, we will also seek cooperation in the foundation of our "Tohoku Forum for Creativity" and other measures aimed at consolidating our research strength.

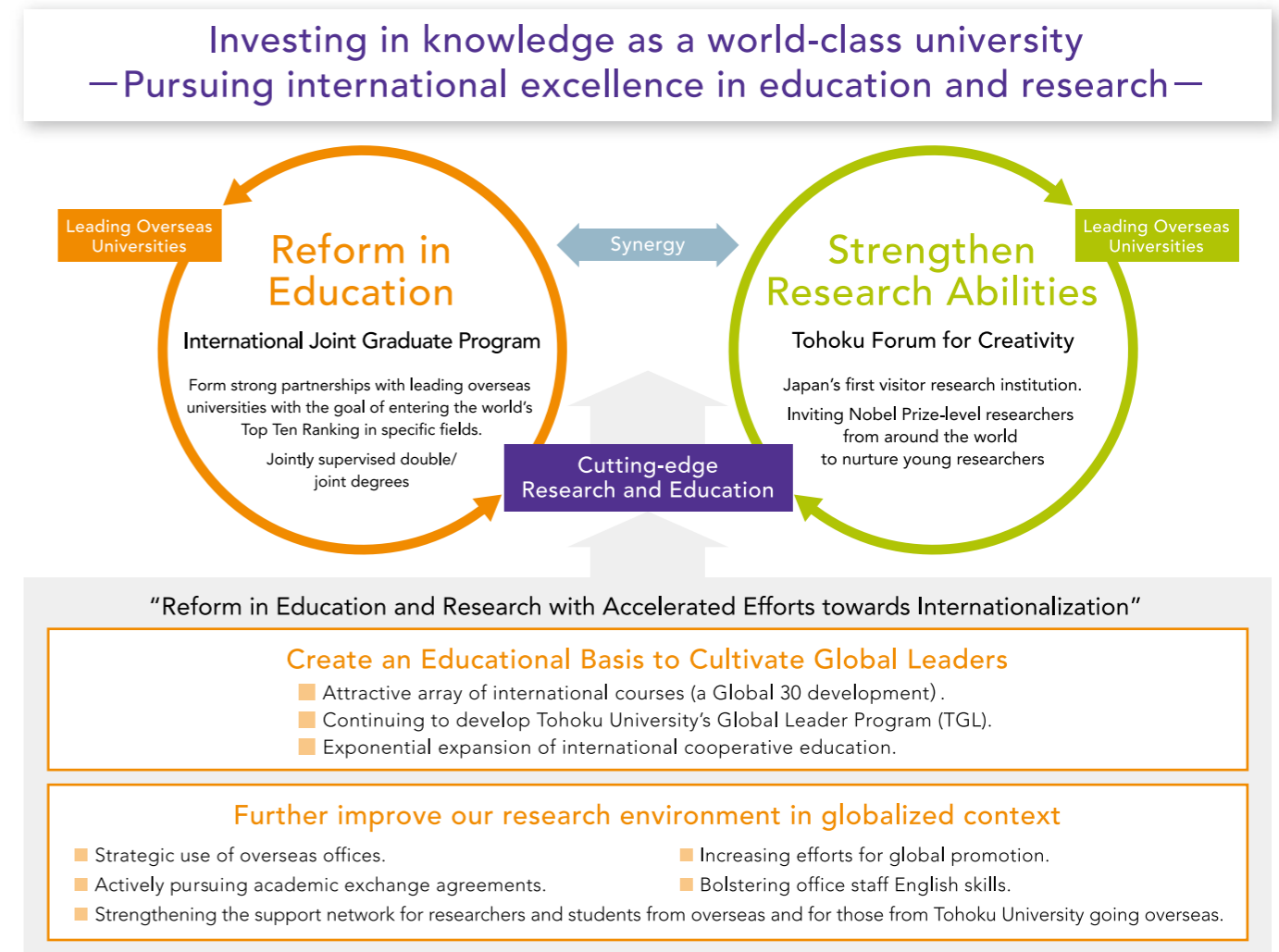
Outline of Tohoku University's Top Global University Project



What is Tohoku University's Global Initiative?

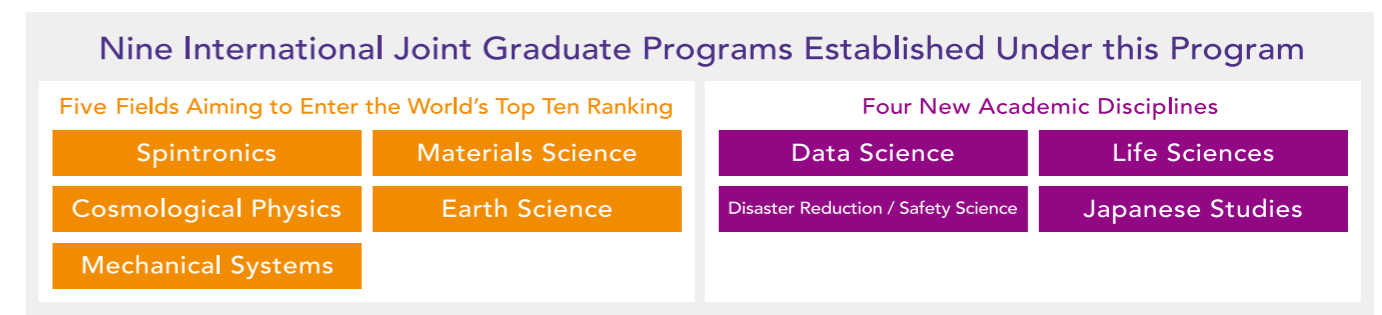
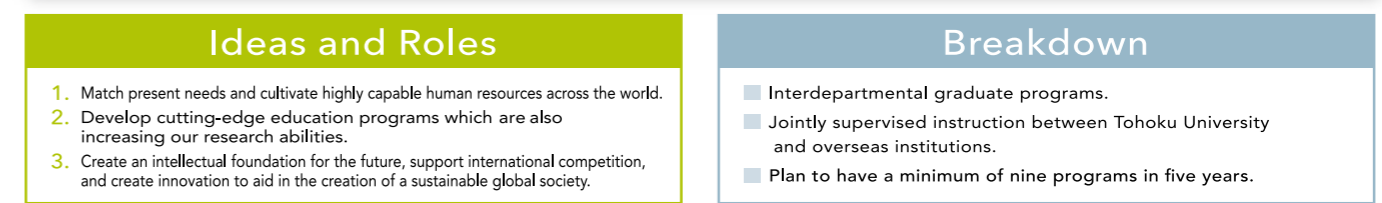
Tohoku University plans to raise their level of internationalization, strengthen their education and research abilities, grow into a world class university, and play a main role in developments that will benefit Japan and the entire world. Achieving this will require brilliant young minds from across Japan

and the world and creating a place that will "allow people to gather, learn and create", and through high level education, create real change in society, while giving these young people a high level "global mindedness".



Foundation of International Joint Graduate Programs

- Using Tohoku University's strengths to make contributions to fields that will be important to humanity in the future, and to raise the level of global society.
- Gather the knowledge of Tohoku University's different departments to overcome the boundaries between disciplines and form strong cooperative education ties with leading overseas universities.



Global Network

グローバルネットワーク

Partnership with 221 world-leading institutions in 36 countries and regions

Tohoku University's unique global network is comprised of academic exchange agreements with many top educational institutions around the world. The university is developing various study abroad programs and expanding its research presence around the world.

世界トップレベルの教育機関と協定 (36か国・地域 221機関)

東北大学は世界各国の教育・研究機関との間で大学間または部局間の学術交流協定を締結。学生・教員の交流を積極的に進めており、教育・研究の舞台は世界へと広がっています。

Country and Region	Institution
Africa	
Morocco	University Mohammed V in Rabat
South Africa	The University of KwaZulu-Natal University of Johannesburg
Asia	
China	Beihang University 北京航空航天大学 Beijing University of Posts and Telecommunications 北京邮电大学 Beijing University of Technology 北京工业大学 China University of Geosciences (Wuhan) 中国地质大学(武漢) Chinese Academy of Social Sciences 中国社会科学院 Chongqing University 重慶大学 City University of Hong Kong 香港城市大学 Dalian University of Technology 大连理工大学 Dongbei University of Finance and Economics 東北财经大学 East China Normal University 华东师范大学 Fudan University 復旦大学 Huazhong University of Science & Technology 华中科技大学 Jilin University 吉林大学 Lanzhou University 蘭州大学 Nanjing University 南京大学 Nanjing University of Aeronautics and Astronautics 南京航空航天大学 Northeastern University 東北大学 Ocean University of China 中国海洋大学 Peking University 北京大学 Shanghai Jiao Tong University 上海交通大学 Shanghai Ocean University 上海海洋大学 Shanghai University 上海大学 Southeast University 東南大学 The Hong Kong University of Science and Technology 香港科技大学 Tianjin University 天津大学 Tongji University 同济大学 Tsinghua University, Beijing 清華大学 University of Science and Technology Beijing 北京科技大学 University of Science and Technology of China 中国科学技术大学 Wuhan University of Technology 武漢理工大学 Xiamen University 廈門大学 Xi'an Jiaotong University 西安交通大学 Yangzhou University 揚州大学 Zhejiang University 浙江大学

Country and Region	Institution
Asia	
India	Indian Institute of Science Indian Institute of Technology Bombay
Indonesia	Bogor Agricultural University Gadjah Mada University Institut Teknologi Bandung Padjadjaran University University of Brawijaya Universitas Indonesia
Malaysia	University of Malaya
Mongolia	Mongolian University of Science and Technology The Mongolian Academy of Sciences
Singapore	National University of Singapore
South Korea	Changwon National University 国立昌原大学校 Chonbuk National University 全北大学校 Chosun University 朝鮮大学校 Chung-Ang University 中央大学校 Chungnam National University 忠南大学校 Dong-eui University 東義大学校 Gwangju Institute of Science and Technology 光州科学技術院 Kongju National University 国立公州大学校 Kookmin University 国民大学校 Korea Advanced Institute of Science and Technology (KAIST) 韓国科学技術院 Korea Institute of Science and Technology 韓国科学技術研究院 Korea University 高麗大学校 Kyung Hee University 慶熙大学校 Kyungpook National University 慶北大学校 Pohang University of Science and Technology (POSTECH) 浦項工科大学校 Pukyong National University 釜慶大学校 Pusan National University 釜山大学校 Seoul National University ソウル大学校 Sogang University 西江大学校 Sungkyunkwan University 成均館大学校 Yeungnam University 嶺南大学校 Yonsei University 延世大学校
Sri Lanka	University of Moratuwa
Taiwan	National Central University 国立中央大学 National Cheng Kung University 国立成功大学 National Chengchi University 国立政治大学 National Chiao Tung University 国立交通大学 National Chung Cheng University 国立中正大学 National Chung Hsing University 国立中興大学 National Taiwan University 国立台湾大学 National Tsing Hua University, Hsinchu 国立清華大学 Soochow University 東吳大学

University-level Agreement:	221 institutions in 36 countries and regions	大学間交流協定数:	36ヶ国・地域 221機関
Department-level Agreement:	492 institutions in 60 countries and regions	部局間交流協定数:	60ヶ国・地域 492機関

(As of January 1, 2018)

Country and Region	Institution
Asia	
Thailand	Asian Institute of Technology Chiang Mai University Chulalongkorn University King Mongkut's Institute of Technology Ladkrabang King Mongkut's University of Technology Thonburi Suranaree University of Technology Thai-Nichi Institute of Technology Thammasat University
Vietnam	Foreign Trade University Ho Chi Minh City University of Technology Vietnam National University, Hanoi
Europe	
Austria	Ge4 – Global Education: Exchanges for Engineers and Entrepreneurs Universität Wien
Belgium	Studiecentrum voor Kernenergie - Centre d'Etude de l'Énergie Nucléaire
Czech	Czech Technical University in Prague
Finland	Aalto University Tampere University of Technology University of Oulu University of Turku
France	Communauté Universitè Grenoble-Alpes École Centrale de Lille École Centrale de Lyon École Centrale de Marseille École Centrale de Nantes CentraleSupélec École des Mines d'Albi-Carmaux École Nationale Supérieure des Mines de Saint-Etienne École Normale Supérieure de Lyon Institut National des Langues et Civilisations Orientales (INALCO) Institut d'Études Politiques de Lyon Institut National des Sciences Appliquées de Lyon Institut Polytechnique de Bordeaux Sorbonne Université Université de Bordeaux Université de Lyon Université de Rennes 1 Université de Strasbourg Université de Technologie Compiègne Université Lumière Lyon 2 Université Paris Diderot Université Rennes 2 Haute Bretagne
Germany	Carl von Ossietzky Universität Oldenburg Deutsches Zentrum für Luft- und Raumfahrt Georg-August-Universität Göttingen Johannes Gutenberg-Universität Mainz Karlsruher Institut für Technologie Rheinisch-Westfälische Technische Hochschule Aachen (RWTH Aachen) Ruprecht-Karls-Universität Heidelberg Technische Universität Berlin Technische Universität Chemnitz Technische Universität Darmstadt Technische Universität Dortmund Technische Universität Dresden Technische Universität Kaiserslautern Technische Universität München Universität des Saarlandes Universität Paderborn Universität Regensburg
Italy	Politecnico di Milano Politecnico di Torino Sapienza - Università di Roma Università degli Studi di Firenze Università degli Studi di Napoli Federico II Università degli Studi di Verona University of Montanà University of North Carolina, Charlotte University of Washington
Netherlands	Delft University of Technology University of Groningen University of Twente
Spain	Universidad de Granada Universidad de Valladolid Universidad Complutense de Madrid
Portugal	Nova University of Lisbon

Country and Region	Institution
Europe	
Sweden	Chalmers University of Technology KTH Royal Institute of Technology Stockholm University Umeå University Uppsala University
Switzerland	École Polytechnique Fédérale de Lausanne Eidgenössische Technische Hochschule Zürich Université de Genève
Poland	Institute of Catalysis and Surface Chemistry, Polish Academy of Sciences
Russia	Far Eastern Branch, Russian Academy of Science (FEB-RAS) Far Eastern Federal University Lobachevsky State University of Nizhni Novgorod Lomonosov Moscow State University National Research University Higher School of Economics Novosibirsk State University Saint Petersburg State University Siberian Branch of the Russian Academy of Sciences
UK	Imperial College London The School of Oriental and African Studies, University of London The University of Nottingham The University of Sheffield The University of York University College London, UCL
Ukraine	National Technical University of Ukraine "Kyiv Polytechnic Institute"
Latin America	
Venezuela	Universidad Simón Bolívar
Middle East	
Iran	University of Tehran
Turkey	Istanbul Technical University Ege University
North America	
Canada	Queen's University University of Ottawa University of Waterloo Institut Polytechnique de Bordeaux
USA	Case Western Reserve University Colorado School of Mines Harvard University Institute of International Education Michigan State University National Institutes of Health of the Department of Health and Human Services Pennsylvania State University Purdue University Rice University Syracuse University Temple University Texas A&M University University at Albany, State University of New York University of Alaska University of California, Berkeley University of California, Davis University of California, Irvine University of California, Los Angeles University of California, Merced University of California, Riverside University of California, San Diego University of California, San Francisco University of California, Santa Barbara University of California, Santa Cruz University of Denver University of Hawai'i at Mānoa University of Maryland, College Park University of Montana University of North Carolina, Charlotte University of Washington
Oceania	
Australia	Macquarie University The Australian National University The University of Melbourne The University of New South Wales The University of Sydney
New Zealand	The University of Auckland
International Organization	
The ITER International Fusion Energy Organization United Nations University - Institute for Environment and Human Security (UNU-EHS)	

Consortia with World's Top Universities

世界トップクラスの大学間コンソーシアム

Tohoku University has entered into a number of international university consortia in order to foster exchange between researchers and students from Tohoku University and various regions and nations. You will probably have the chance to participate in international symposiums, workshops and seminars held by these consortia.

東北大学は様々な地域や二国間での研究者や学生の国際交流を目的とした国際的大学間コンソーシアムに加盟しています。学生にもコンソーシアムが開催するシンポジウム、ワークショップ、セミナーなどに参加する機会を提供しています。

APRU

Association of Pacific Rim Universities

APRU was established in 1997 with the aim of fostering cooperation in education and research contributing to economic, scientific and cultural advancement and has grown rapidly to become a reputable international organization of leading research universities in the Pacific Rim. It organizes various exchange programs under three thematic priorities within its Strategic Framework and holds annual meetings for presidents and senior staff of the member universities to discuss and plan its future activities.

As Part of Tohoku University's active participation, we are taking on the role of regional program hub for APRU's Multi-Hazards Program from 2013.

Established: 1997

Membership since: 2008

Participating Institutions: 50

環太平洋大学協会

APRU (アプル) は、環太平洋圏の主要大学間の相互交流を深めることを通じて、環太平洋地域社会にとって重要な諸問題に対し、教育・研究の分野から協力・貢献することを目的に、1997年に設立された地域型のコンソーシアムです。



<http://www.apru.org/>

AEARU

The Association of East Asian Research Universities

AEARU was established in 1996 with the aim of forming a forum for the presidents of leading research universities and carrying out mutual exchanges between the major universities in East Asia. Expectations are that this regional consortium, on the basis of common academic cultural backgrounds among member universities, will contribute not only to the development of higher education and research but also to the opening up of a new era leading to cultural economic and social progress in the region.

Tohoku University served as a board member from 2012 to 2015.

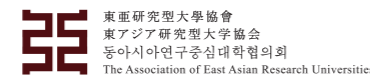
Established: 1996

Membership since: 1998

Participating Institutions: 18

東アジア研究型大学協会

AEARU (アイール) は、東アジアの主要な研究型大学の研究者及び学生の交流、共同研究の推進、ワークショップ等の開催など、大学間の共通の関心に基づく交流を行うことを目的に、1996年に結成された地域型のコンソーシアムです。



<http://www.aearu.org/>

T.I.M.E.

Top Industrial Managers for Europe

T.I.M.E. is an international network of leading higher educational institutions specializing in engineering focused on master-level double degree programs. It now launches other innovative exchange programs through task forces formed by member institutions to foster internationally competitive engineers for tomorrow's world.

Established: 1989

Membership since: 2007

Participating Institutions: 56

欧州トップレベルエンジニア養成ネットワーク

T.I.M.E. (タイム) は、ヨーロッパの主要な理工系大学における修士・博士課程レベルでのダブルディグリープログラムによる交流を通じ、トップレベルのエンジニアを養成することを目的に、1989年に設立された地域型のコンソーシアムです。



<https://www.time-association.org/>

HeKKSaGOn

A network of six leading universities from Japan and Germany: Heidelberg, Kyoto, Karlsruhe, Tohoku (in Sendai), Göttingen, Osaka

HeKKSaGOn German-Japanese University Network founded in 2010, is a bilateral university network composed of three Japanese and three German major universities that aims to promote exchange between Japan and Germany through activities such as research staff/student exchange, joint research, workshops and summer schools. Tohoku University hosted the 4th HeKKSaGOn President's meeting in April 2015.

Established: 2010

Membership since: 2010

Participating Institutions: 6

日独6大学ネットワーク

HeKKSaGOn (ヘキサゴン) は、日本とドイツの主要大学の研究者及び学生の交流、共同研究の推進、サマースクール等の開催など、日独大学間の交流を推進することを目的に、2010年に結成された二国間型のコンソーシアムです。



<https://www.heksagon.net/>

RENKEI

Japan-UK Research and Education Network for Knowledge Economy Initiatives

RENKEI, the Japan-UK Research and Education Network for Knowledge Economy Initiatives, is a bilateral consortium that was formed in 2012 by leading universities from Japan and the UK under the support of the British Council. Its aim is to encourage knowledge transfer and research collaboration not only between the two countries, but also between the higher education and industry sectors.

Established: 2012

Membership since: 2012

Participating Institutions: 12

日英産学連携プログラム

RENKEI (レンケイ) は、日英大学間(学学連携)の連携を基盤とし、共同研究、知識移転、人材育成の分野において、産業界との連携を強化することを目的に、2012年に設立された二国間型のコンソーシアムです。



RENKEI

Japan-UK Research and Education Network for Knowledge Economy Initiatives

<http://www.renkei-researcher-schools.org/>



Study in SENDAI

Sendai : City of Trees

Combining the convenience of a modern city with abundant natural scenery, Sendai, where Tohoku University is located, is often called “the City of Trees.” There are seasonal events throughout the year, attracting tourists from around the nation and local residents alike. Sendai is situated between the ocean and mountains, with easy access to hot spring spas, ski resorts, and the scenic coastal islands of Matsushima.

杜の都仙台

東北大学のある仙台は「杜の都」とも称され、大都市でもありながら豊かな自然を抱える美しい街です。一年を通じて様々なイベントがあり、四季折々を楽しめる街です。仙台は海と山に挟まれた立地にあり、近郊には温泉やスキー場もあり、日本三景に数えられる松島も人気の観光地です。

Climate

Sendai is characterized by a very moderate climate, yet you can experience the beauty of the four seasons. There are only a few days in summer reaching 30°C (86°F) and few days in winter colder than -3°C (26°F) and little snow.

気候

仙台は四季の変化に富みながら、穏やかな気候で暮らしやすい街です。夏でも30°Cを超える日は少なく、冬もマイナス3°C以下になる日や10cm以上の積雪もほとんどありません。

Arts and Sports

The city of Sendai offers its guests and residents a broad variety of cultural activities. The games of the city's own professional baseball, soccer, volleyball, and basketball teams are among the most popular events. There is an impressive variety of museums, galleries and concert halls. Sendai offers rich collections of art from all around Japan and overseas.

文化・美術館・スポーツ

仙台には、野球、サッカー、バスケのプロチームの拠点があり、ホームゲームには多くの市民が応援に駆け付けます。また、博物館、美術館、コンサートホールなどの施設も充実しており、音楽、演劇、芸術、歴史の世界に触れることができます。

Major Events in downtown Sendai

May 5月	Aoba Festival 仙台青葉祭り
August 8月	Tanabata Festival 七夕まつり
September 9月	Jozenji Street Jazz Festival 定禅寺通りジャズフェスティバル
December 12月	Pageant of Starlight 光のパージェント



Pageant of Starlight

写真提供: 仙台市観光交流課



Tanabata Festival

写真提供: 仙台市観光交流課

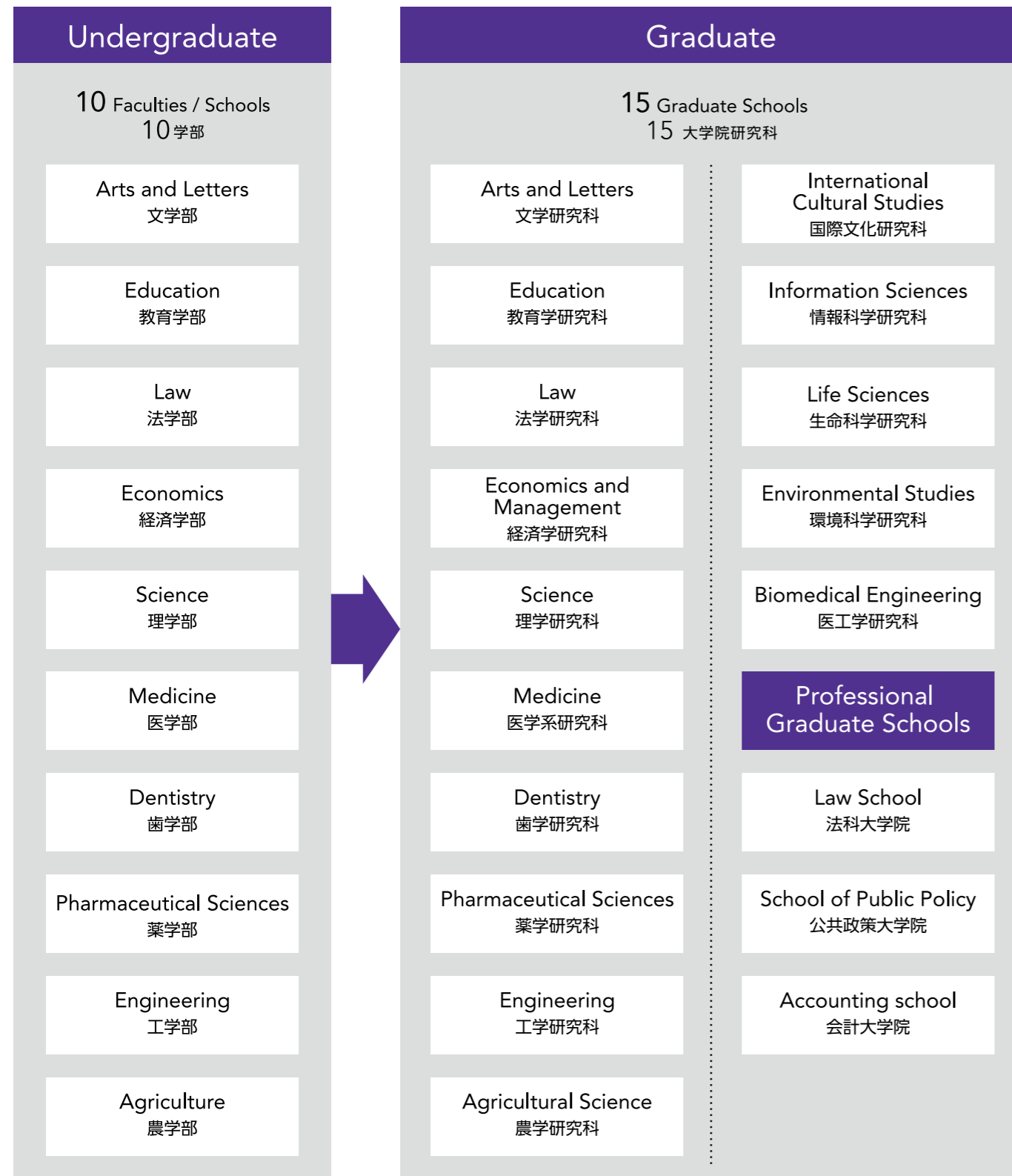
Study in Tohoku University

東北大学での学び

At Tohoku University, students are able to study and research in a wide range of fields.

Undergraduate programs cover 10 fundamental fields of specialization - 4 in the humanities and 6 in the sciences. Moreover, you will be able to further increase your specialization in 15 graduate schools in expanded fields, enabling you to pursue research in cutting-edge areas.

東北大学では、幅広い分野の教育・研究を行うことができます。文系4学部、理系6学部から構成される計10学部で各分野の専門基礎を学び、さらにその先の専門大学院を含む15の大学院で、より専門性の高い最先端の研究指導を受けることができます。



Courses Taught in English (The Future Global Leadership Program)

Undergraduate

Course	Fields	Degree	Admission	Contact
AMC Advanced Molecular Chemistry Course	Chemistry, Science	BSc	Oct.	E-mail: tohoku-fgl@grp.tohoku.ac.jp Web: http://www.web.tohoku.ac.jp/amc/
IMAC-U International Mechanical and Aerospace Engineering Course	Mechanical and Aerospace Engineering, Engineering	BEng		E-mail: tohoku-fgl@grp.tohoku.ac.jp Web: http://g30.eng.tohoku.ac.jp/imac/
AMB Applied Marine Biology Course	Applied Biosciences, Agriculture	BAgri		E-mail: tohoku-fgl@grp.tohoku.ac.jp Web: http://www.agri.tohoku.ac.jp/amb/

Graduate

Course	Fields	Degree	Admission	Contact
IGPAS International Graduate Program for Advanced Science	Science	M/D	Oct.	E-mail: direct@mail.sci.tohoku.ac.jp Web: http://www.sci.tohoku.ac.jp/english/igpas/
IPHS International Post-Graduate Program in Human Security	Medicine, Agricultural Science, Environmental Studies	M/D	Apr. Oct.	E-mail: human_security@grp.tohoku.ac.jp Web: http://human-security.jp/
IELP International Environmental Leadership Program	Environmental Studies	M/D	Oct.	E-mail: kankyo.kyomu@grp.tohoku.ac.jp Web: http://www.kankyo.tohoku.ac.jp/ielp/index.html
IMAC-G International Mechanical and Aerospace Engineering Course - Graduate	Engineering	M/D		E-mail: imac-g@mech.tohoku.ac.jp Web: http://g30.eng.tohoku.ac.jp/imac/
IMSE International Materials Science and Engineering Course	Engineering	M	Oct.	E-mail: eng-in@grp.tohoku.ac.jp Web: http://g30.eng.tohoku.ac.jp/imse/
GPEM Global Program in Economics and Management	Economics and Management	M/D		E-mail: gpem@grp.tohoku.ac.jp Web: http://www.econ.tohoku.ac.jp/econ/english/GPEM/index.html
IGSAP International Graduate School of Accounting Policy	Accounting	M	Apr. Oct.	E-mail: igsap_admin@econ.tohoku.ac.jp Web: http://www.econ.tohoku.ac.jp/econ/IGSAP/english/
ITSC Information Technology and Science Course	Information Sciences	M	Apr.	E-mail: is-kyom@grp.tohoku.ac.jp Web: http://www.is.tohoku.ac.jp/index-e.html
IOHS Interface Oral Health Science Course	Dentistry	D	Apr. Oct.	E-mail: international@dent.tohoku.ac.jp Web: http://www.dent.tohoku.ac.jp/english/
ICLS International Course of Life Sciences	Life Sciences	M/D		E-mail: lif-kyom@grp.tohoku.ac.jp Web: https://www.lifesci.tohoku.ac.jp/en/curriculums/course/
IGPL International Graduate Program in Language Sciences	International Cultural Studies	M/D	Oct.	E-mail: int-kkdk@grp.tohoku.ac.jp Web: http://www.intcul.tohoku.ac.jp/ls/
NMC Network Medicine Course	Medicine	D	Apr. Oct.	E-mail: m-daigakuin@grp.tohoku.ac.jp Web: http://www.int-exchange.med.tohoku.ac.jp/
BMC Basic Medicine Course	Medicine	M		
DSP II Data Sciences Program II	Information Science, Life Sciences, Economics and Management, Biomedical Engineering	M/D	Oct.	E-mail: ilo@is.tohoku.ac.jp Web: http://www.is.tohoku.ac.jp/_eng/dsp2/index.html
IRP International Robotics Program	Engineering, Information Sciences	M/D	Oct.	E-mail: eng-in@grp.tohoku.ac.jp Web: http://g30.eng.tohoku.ac.jp/imac

Undergraduate Programs (For Degree Seeking Students)

学部一覧

Classes for degree courses taught in Japanese, which you can take together with Japanese students, begin in April. Degree courses taught in English start in October. The courses taught in English are attended by international students from a variety of countries. The number of international coeducational classes open to all students is also being increased, allowing you to take classes taught in English alongside Japanese students and providing many chances for you to study the Japanese language.

日本人学生と一緒に日本語で授業を受ける学位コースは4月、英語のみの学位コースは10月から授業が始まります。英語コースは様々な国からの留学生が多く受講しています。日本人と一緒に学ぶ国際共修授業も増えているため、日本人と一緒に英語で授業を受けたり、日本語を学ぶ機会もたくさん用意されています。

Faculties / Schools	Department	Course in English (See p.14)	Language		Admission	
			JPN	ENG	APR	OCT
Arts and Letters 文学部	Humanities and Social Sciences 人文社会科学部		○		○	
Education 教育学部	Educational Science 教育科学部		○		○	
Law 法学部	Law 法学部		○		○	
Economics 経済学部	Economics 経済学科		○		○	
	Business Administration 経営学科		○		○	
Science 理学部	Mathematics 数学科		○		○	
	Physics 物理学科		○		○	
	Astronomy and Geophysics 宇宙地球物理学科		○		○	
	Chemistry 化学科	AMC	○	○*	○	○*
	Geoenvironmental Science 地圏環境科学科		○		○	
	Earth and Planetary Materials Science 地球惑星物質科学科		○		○	
	Biology 生物学科		○		○	
Medicine 医学部	Medical Sciences 医学科		○		○	
	Health Sciences 保健学科		○		○	
Dentistry 歯学部	Dentistry 歯学科		○		○	
Pharmaceutical Sciences 薬学部	Pharmaceutical Sciences 創薬科学科		○		○	
	Pharmacy 薬学科		○		○	
Engineering 工学部	Mechanical and Aerospace Engineering 機械知能・航空工学科	IMAC-U	○	○*	○	○
	Electrical, Information and Physics Engineering 電気情報理工学科		○		○	
	Applied Chemistry, Chemical Engineering and Biomolecular Engineering 化学・バイオ工学科		○		○	
	Materials Science and Engineering 材料科学総合学科		○		○	
	Civil Engineering and Architecture 建築・社会環境工学科		○		○	
Agriculture 農学部	Applied Bio-Sciences 生物生産科学科	AMB	○	○*	○	○*
	Applied Biological Chemistry 応用生物化学科		○		○	

*= 英語による学位取得コースの在籍者のみ English course students only

Undergraduate Admission

学部生

Courses Taught in Japanese (Privately Financed International Students Entrance Exam)

If you wish to participate in programs taught in Japanese, you will enter in April. Please begin your preparations by undergoing the Examination for Japanese University Admission for International Students (EJU) in June or November of the previous year.

日本語で行われるコース (私費外国人留学生入試)

日本語で学位を取得する場合、入学時期は4月です。前年の6月または11月の日本留学試験の受験から準備を始めてください。詳細および2018年度に実施する入試の概要については、下記URLにて確認してください。
※<http://www.tnc.tohoku.ac.jp/>

1	出願前： 6月～	日本留学試験の受験 (6月または11月)	TOEFL iBTまたはTOEFL PBT の受験と送付の準備 (3月以降～毎月)	募集要項の請求	卒業・成績 証明書の準備	日本国内の 連絡先の確保	パスポートの準備
2	出願時： 1月上旬	出願書類等の提出		入学検定料の支払い		パスポートのコピー	
3	入試： 2月中旬						
4	合格発表後： 3月上旬～中旬	入学手続き 入学金の支払い			宿舎の決定		
5	入学式： 4月						

<問い合わせ先> 東北大学教育・学生支援部入試課 〒980-8576 仙台市青葉区川内28 Tel: 022-795-4807 E-mail : nyushi4@grp.tohoku.ac.jp

Courses Taught in English (The Future Global Leadership Program)

The Future Global Leadership (FGL) program offers three undergraduate courses taught entirely in English in the fields of Molecular Chemistry, Mechanical, Aerospace Engineering and Marine Biology. Please refer to our website to learn about the requirements before applying. The application guidelines will be updated in October. Further information is available here: <http://www.insc.tohoku.ac.jp/english/>

Course	Fields	Contact
AMC Advanced Molecular Chemistry Course	Chemistry, Science	E-mail: tohoku-fgl@grp.tohoku.ac.jp Web: http://www.web.tohoku.ac.jp/amc/
IMAC-U International Mechanical and Aerospace Engineering Course Undergraduate	Mechanical and Aerospace Engineering, Engineering	E-mail: tohoku-fgl@grp.tohoku.ac.jp Web: http://g30.eng.tohoku.ac.jp/imac/
AMB Applied Marine Biology Course	Applied Biosciences, Agriculture	E-mail: tohoku-fgl@grp.tohoku.ac.jp Web: http://www.agri.tohoku.ac.jp/amb/

1. Application Requirements

1) Academic qualification exam or standardized national exam

You must submit scores for the required subjects from any one of the following.

A	IB, SAT Subject Tests or GCE (A-Level)	Required Subjects depend on the course.
B	National standardized examination offered in your home country	Required Subjects depend on the course.
C	EJU	Required Subjects and Minimum scores for EJU depend on the course.

2) English Proficiency

You must fulfill any one of the following.

A	TOEFL iBT®TEST / TOEFL PBT®TEST / IELTS (Academic Module)	TOEFL iBT®TEST: 79 or higher / TOEFL PBT®TEST: 550 or higher / IELTS: 6.0 or higher
B	Submit a written certificate from your principal if you attended for four years or longer a middle/high school where the main language used was English. Applicable countries only.	

2. Documents to be submitted

- 1) Photograph
- 2) Statement of Reasons for Applying
- 3) Proof of Graduation / Certificate of Expected Graduation
- 4) Academic Transcript
- 5) Score of Academic or Standardized Examination
- 6) Score of English Proficiency Test
- 7) Proof of Nationality

3. Submit your Application

Complete the online application through the T-cens system on the FGL program's website.
https://applicant.insc.tohoku.ac.jp/t-cens_tohoku/login.php

4. Application Period

1st Recruitment Period	Jan.
2nd Recruitment Period	Apr.

※The period is subject to change.

<Inquiries>

Address: 41 Kawauchi, Aoba-ku, Sendai-shi 980-8576, Japan
Tel: +81-22-795-3242 E-mail: ttohoku-fgl@grp.tohoku.ac.jp Official website: <http://www.insc.tohoku.ac.jp/english/>

Graduate Schools (For Degree Seeking Students)

大学院一覧

Tohoku University offers degree courses, open to both international and Japanese students, taught in Japanese and/or English. It also has degree courses for international students taught entirely in English. Application qualifications, procedures and application period vary depending on each graduate school.

An outline follows, but applicants should refer to the Contact Information list (P.27) and contact their desired graduate school directly for detailed information.

日本人学生と一緒に日本語や英語で授業を受けて学位を取得する入試と、英語だけで学位を取得するコースがあります。いずれも各研究科の指導教員や担当係とコンタクトを取って、入学の方法を確認する必要があります。

詳細情報については、P27の連絡先一覧の各研究科の担当係に問い合わせてください。

Graduate Schools	Department/Major/ Division/School	Course in English (See p.14)	Language		Admission	
			JPN	ENG	APR	OCT
Arts and Letters 文学研究科	Humane Studies 文化科学		○		○	
	Linguistic Studies 言語科学		○		○	
	Historical Studies 歴史科学		○		○	
	Human Sciences 人間科学		○		○	
Education 教育学研究科	Educational Science 総合教育科学		○		○	○
	Educational Design and Measurement 教育設計評価		○		○	○
Law 法学研究科	Law and Society (Professional Degree Program) 総合法制(専門職学位課程)		○		○	
	Public Law and Policy (Professional Degree Program) 公共法政策(専門職学位課程)		○		○	
	Legal and Political Studies 法政理論研究		○	○	○	○
Economics and Management 経済学研究科	Economics and Management 経済経営学	GPEM DSP IGSAP	○	○	○	○
	Accountancy (Professional Degree Program) 会計専門職(専門職学位課程)		○	○	○	○
Science 理学研究科	Mathematics 数学	IGPAS	○	○	○	○
	Physics 物理学		○	○	○	○
	Astronomy 天文学		○	○	○	○
	Geophysics 地球物理学		○	○	○	○
	Chemistry 化学		○	○	○	○
Earth Science 地学		○	○	○	○	
Medicine 医学系研究科	Medical Sciences 医科学	IPHS BMC NMC	○	○	○	○
	Disability Sciences 障害科学		○	○	○	○
	Health Sciences 保健学		○	○	○	○
	Public Health 公衆衛生学		○	○	○	○
Dentistry 歯学研究科	Dental Sciences 歯科学	IOHS	○	○	○	○
Pharmaceutical Sciences 薬学研究科	Molecular Pharmaceutical Science 分子薬科学		○	○	○	○
	Life and Pharmaceutical Science 生命薬科学		○	○	○	○
	Pharmacy 医療薬学		○	○	○	○
Engineering 工学研究科	Mechanical Systems Engineering 機械機能創成	IMAC-G IMSE DSP IRP	○	○	○	○
	Finemechanics ファインメカニクス		○	○	○	○
	Robotics ロボティクス		○	○	○	○
	Aerospace Engineering 航空宇宙工学		○	○	○	○
	Quantum Science and Energy Engineering 量子エネルギー工学		○	○	○	○

Graduate Schools	Department/Major/ Division/School	Course in English (See p.14)	Language		Admission	
			JPN	ENG	APR	OCT
Engineering 工学研究科	Electrical Engineering 電気エネルギーシステム	IMAC-G IMSE DSP IRP	○	○	○	○
	Communications Engineering 通信工学		○	○	○	○
	Electronic Engineering 電子工学		○	○	○	○
	Applied Physics 応用物理学		○	○	○	○
	Applied Chemistry 応用化学		○	○	○	○
	Chemical Engineering 化学工学		○	○	○	○
	Biomolecular Engineering バイオ工学		○	○	○	○
	Metallurgy 金属フロンティア工学		○	○	○	○
	Materials Science 知能デバイス材料科学		○	○	○	○
	Materials Processing 材料システム工学		○	○	○	○
	Civil Engineering and Environmental Engineering 土木工学		○	○	○	○
	Architecture and Building Science 都市・建築学		○	○	○	○
Management Science and Technology 技術社会システム	○	○	○	○		
Agricultural Science 農学研究科	Biological Resource Science 資源生物科学	IPHS	○	○	○	○
	Life Sciences 応用生命科学		○	○	○	○
	Bioscience and Biotechnology for Future Bioindustries 生物産業創成科学		○	○	○	○
International Cultural Studies 国際文化研究科	International Cultural Studies 国際文化研究	IGPL	○	○	○	○
Information Sciences 情報科学研究科	Computer and Mathematical Sciences 情報基礎科学	ITSC DSP	○	○	○	○
	System Information Sciences システム情報科学		○	○	○	○
	Human-Social Information Sciences 人間社会情報科学		○	○	○	○
	Applied Information Sciences 応用情報科学		○	○	○	○
Life Sciences 生命科学研究科	Integrative Life Sciences 脳生命統御科学	ICLS DSP	○	○	○	○
	Ecological Developmental Adaptability Life Sciences 生態発生適応科学		○	○	○	○
	Molecular and Chemical Life Sciences 分子化学生物学		○	○	○	○
Environmental Studies 環境科学研究科	Environmental Studies for Advanced Society 先進社会環境学	IELP IPHS	○	○	○	○
	Frontier Sciences for Advanced Environment 先端環境創成学		○	○	○	○
Biomedical Engineering 医工学研究科	Biomedical Engineering 医工学		○	○	○	○

Graduate Admission

大学院正規課程

If you wish to enter graduate school, you should first look for a prospective academic advisor in your preferred field. Please see our website to help you decide what kind of research you want to perform at Tohoku University. The application process differs depending on the graduate school.

Graduate Degree Program (Degree seeking students)

1. Get consent of acceptance from a prospective supervisor. 受入内諾の取得

You should first find a prospective supervisor. Find faculty members in the field of your interest, contact them, and obtain consent of acceptance.

申請には、まず受入教員を見つける必要があります。希望する研究分野の教員をWEBで検索し、直接連絡のうえ受入許可を取得してください。

— To search by name, school, field, or keyword:

氏名、分野、キーワードから探す

[Academic Research Staff at Tohoku University](#)

[東北大学研究者紹介](#)

— To search by department and/or school:

研究科、専攻から探す

[Tohoku University > Academics > Graduate Schools](#)

— To search courses in English:

英語による学位取得コースから探す

[Tohoku University > Academics > Courses taught in English](#)

大学院に入学を希望する場合は、まず自分が希望する研究分野や、専門分野の教員を探す必要があります。東北大学でどんなことを研究したいのか、WEBで調べてみてください。入学を希望するコースや教員によって入学の方法が異なります。



<http://db.tohoku.ac.jp/whois/>

2. Check application eligibility/procedure. 出願資格・手続きの確認

The following items differ depending on the graduate school. Contact the academic affairs section, or office in charge of admission (See P. 27 for contact information), directly or through your prospective supervisor for details.

— application eligibility, documents, and schedule

— entrance examination

— when and how to pay application fee

If you do not meet the requirement below you may need to take a preliminary screening. Confirm you are eligible to apply.

Master Course:

You have finished a total of 16 years of education from primary school to a 4-year university and earned, or expect to earn, a bachelor's degree.

Doctor Course:

You have earned, or are expected to earn, a master's degree.

出願に係る手続きは研究科により異なります。詳細は、直接又は受入教員を通して教務係(又はその他の入試担当者)に連絡し確認してください。

— 出願資格、時期、書類

— 入学試験の実施方法・時期

— 検定料の支払い時期・方法

以下の出願資格に当てはまらない場合は、出願資格の確認のため事前審査が必要になる場合があります。

博士前期(修士)課程への出願:

初等から高等まで計12年以上の教育(日本の小中高校に相当)を受け、大学の4年制の課程を卒業により学士号を取得又は取得見込みの者

博士後期課程への出願:

修士号を取得又は取得見込みの者

3. Submit application documents. 出願書類の提出

4. Take an exam. 受験

In some cases applicants for admission for courses taught in English can take the exam in English without coming to Japan. Contact the academic affairs section in other cases.

英語による学位取得コースにより入学しようとする場合は、試験は英語で実施され、来日が不要な場合もあります。その他の場合の試験方法等については研究科により異なります。

Non-degree Programs

非正規生

Research Students

Tohoku University also actively recruits short-term non-degree international students, i.e. research students. In general, research students receive guidance for their research under an academic advisor. Some students enter as research students to receive academic guidance before applying to a degree-conferring program.

How to apply

To become a research student, you should first find a professor to be your academic advisor, and contact him/her directly. (This is similar to the graduate school application procedure.) Once you have found an academic advisor, you should undergo application procedures for the relevant faculty/graduate school. You may apply to a wide range of departments at Tohoku University, including faculties, graduate schools, and research institutes. As a research student, you must pay the designated examination, admission, and tuition fees. The term of study for research students is no more than one year.

Credited Auditor

Students can enroll in courses and receive credit for those courses if they meet the courses' requirements, but it is unusual for international students to enroll under this system.

Special Visiting Trainees

This status is given to students who receive training at Tohoku University for more than 3 days but less than 90 days. Students from countries having a visa waiver agreement with Japan usually do not obtain a student visa/student residential status. They are not "registered" students.

Research Students can apply to Tohoku University's 10 faculties, 15 graduate schools, and the below organizations affiliated with those graduate schools, that conduct research/education.

Research Institutes

Institute for Materials Research (IMR)	金属材料研究所
Institute of Development, Aging and Cancer	加齢医学研究所
Institute of Fluid Science	流体科学研究所
Research Institute of Electrical Communication	電気通信研究所
Institute of Multidisciplinary Research for Advanced Materials	多元物質科学研究所
International Research Institute of Disaster Science (IRIDeS)	災害科学国際研究所

Inter-Department Institutes for Education and Research

Center for Northeast Asian Studies	東北アジア研究センター
Research Center for Electron Photon Science	電子光理学研究センター
Research Center for Neutrino Science	ニュートリノ科学研究センター
Institute for Excellence in Higher Education	高度教養教育・学生支援機構
Frontier Research Institute for Interdisciplinary Sciences	学際科学フロンティア研究所
The Center for Academic Resources and Archives	学術資源研究公開センター
Center for Information Technology in Education	教育情報基盤センター
Cyclotron and Radioisotope Center	サイクロトロン・ラジオアイソトープセンター
New Industry Creation Hatchery Center (NICHe)	未来科学技術共同研究センター
Cyberscience Center	サイバーサイエンスセンター

Other Institutions

Environment Conservation Center	環境保全センター
Advanced Institute for Materials Research (AIMR)	材料科学高等研究所
Tohoku Medical Megabank Organization (ToMM)	東北メディカル・メガバンク機構

研究生

東北大学では、学位を取得しない短期の留学生も積極的に受け入れています。研究生として、指導教員の下に研究指導を受ける制度が一般的です。また、学位を取得する課程に入学する前に、指導を受けるために研究生となることがあります。

研究生になるには、大学院入試と同様に、はじめに指導を受ける教員を探し、直接教員に指導を依頼します。指導教員が決まったら、各学部・大学院などへ出願の手続きをとります。研究生は、東北大学の学部・大学院のほか、研究所などで広く受け入れられています。出願・入学には所定の検定料・入学料・授業料を払う必要があります。在学期間は1年以内です。

科目等履修生

授業科目を履修し、合格と認められた場合、当該単位が取得できます。外国人留学生の例は多くはありません。

特別訪問研修生

3日以上90日未満の期間、東北大学で研修を行う場合の東北大学での身分です。通常、日本のビザ免除国では留学ビザ・留学の在留資格は取得しません。「学籍」はありません。

東北大学は、10学部・15大学院のほか、下記の組織では15大学院と連携して教育・研究を行っています。

Programs for Partner Institutions

協定校在籍者対象のプログラム

Tohoku University has an extensive range of Student Exchange Programs with universities throughout the world, which are open to undergraduate and graduate students. You might also be able to have your Tohoku University course work credited towards your degree back home.

東北大学では世界各国の学術協定校からの交換留学や、サマープログラム等、様々な期間のプログラムを用意しています。また、学部生や大学院生に対して広く門戸を開いていることも特徴です。

Exchange Programs

- Junior Year Program in English (JYPE)
- International Program in Liberal Arts (IPLA)
- Cooperative Laboratory Study Program (COLABS)
- Direct Enrollment Education Program for Humanity / Social science students (DEEP-Bridge)
- Direct Enrollment Education Program for Natural science students (DEEP)

Program	Duration	Language		Eligibility		Outline	Requirement (per semester)
		JPN	EN	U	G		
JYPE	2 semesters (F+S) 1 semester (F)		○	○		<ul style="list-style-type: none"> • Lectures on Science, Engineering and Agricultural Science • Japanese language and culture courses • Research in a laboratory • Research presentation 	13 TU credits or more
IPLA	2 semesters (F+S) 1 semester (F)		○	○		<ul style="list-style-type: none"> • Lectures on Liberal Arts • Japanese language and culture courses • Activities with Japanese students • Final presentation 	13 TU credits or more
COLABS	2 semesters (F+S, S+F) 1 semester (F or S)		○		○	<ul style="list-style-type: none"> • Research in a laboratory • Research presentation 	30 ECTS equivalent credits*3 or more in research
DEEP-Bridge	2 semesters (F+S) 1 semester (F or S)	○	○	○	○	<ul style="list-style-type: none"> • Japanese language classes and regular courses taught in Japanese 	13 TU credits or more
						<ul style="list-style-type: none"> • Research in a laboratory 	Research Report
DEEP	2 semesters (F+S, S+F) 1 semester (F or S)	○			○	<ul style="list-style-type: none"> • Auditing classes 	13 TU credits or more
						<ul style="list-style-type: none"> • Research in a laboratory 	30 ECTS equivalent credits*3 or more in research

- *1: 3rd or 4th year only
- *2: 2nd or 3rd year only
- *3: 750 school hours
- *4: Japanese proficiency (JLPT N3 or higher)
- *5: Japanese proficiency (JLPT N1 recommended) required to take classes taught in Japanese.

F=Fall (Oct.-Feb.) S=Spring (Apr.-Aug.)
U=Undergraduate Students G=Graduate Students
TU=Tohoku University

Financial Aid

Since these programs are based on exchange agreements between Tohoku University and the students' home institutions, tuition fees are waived for exchange students. Although the students themselves should basically bear the cost of living, they are eligible to apply for the JASSO Student Exchange Support Program (Scholarship for Short-term Study in Japan), which provides an allowance of 80,000 Yen/month for the duration of study. Applicants will be asked to indicate their interest at the time of application.

For more information: <http://www.insc.tohoku.ac.jp/english/exchange/>

Summer Programs

- Tohoku University Japanese Program (TUJP)
- Tohoku University Science Summer Program (TSSP)

Program	Duration	Language		Eligibility		Outline	Credits Awarded
		JPN	EN	U	G		
TUJP	2 weeks Session I: Jul.2 – Jul.17, 2018 Session II: Jul.23 – Aug.7, 2018	○	○	○		Lectures on Japanese Language, culture, and society	4 ECTS equivalent credits
TSSP	2 weeks Jun.18 – Jul.13, 2018		○	○		Lectures on Science and Engineering	4 ECTS equivalent credits

This schedule is for 2018. Please see the website for the latest information: <http://www.insc.tohoku.ac.jp/english/short/>

Double Degree Programs & Joint Education Programs

The Double Degree Program is based on a memorandum of understanding between Tohoku University and its partner schools. Under this program, students can undergo research guidance at and receive degrees from both universities. Under the Joint Education Program, two universities jointly supervise the student. The student receives a degree (master) from the host university.

Program	Double Degree Program	Joint Education Program
Fields	Science, Engineering, Agricultural Science, Information Sciences, Environmental Studies	Materials Science and Engineering, Physics, Mechanical Engineering, Precision Instruments
Eligibility	Master students	
Partner universities	Ecole Centrale Group (France) INSA de Lyon (France) KTH Royal Institute of Technology (Sweden)	Tsinghua University (China)
Duration	2 to 2.5 years	1.5 years
Language	English and /or Japanese	

Other Double Degree Programs

Some Tohoku University graduate schools independently provide double degree programs with certain partner universities. Please contact the relevant graduate school for details.

Graduate School of Law
Graduate School of Economics and Management
Graduate School of Medicine
Graduate School of Dentistry
Graduate School of Engineering
International Post-Graduate Program in Human Security (In collaboration with the Graduate Schools of Agricultural Science, Medicine, Environmental Studies, and International Cultural Studies)

International Joint Graduate Programs

Collaborating with leading universities abroad, International Joint Graduate Programs enhance the students' competitive edge in fields where Tohoku University has strengths. Supervised by both home and host universities, students receive a degree from their home university, along with a certificate of joint-supervision.

Programs	Contact
Spintronics	Graduate School of Science
Materials Science	Graduate School of Engineering
Cosmological Physics	Graduate School of Science
Earth Science	Graduate School of Science
Mechanical Systems	Graduate School of Engineering
Data Science	Graduate School of Information Sciences
Life Science	Graduate School of Life Sciences
Disaster Reduction/Safety Science	International Research Institute of Disaster Science
Japanese Studies	Graduate School of Arts and Letters

Fees and Expenses 費用

Tohoku University's application, admission, and tuition fees are shown in the table below.

		(in Japanese yen)		
		Application Fee / 検定料	Admission Fee / 入学料	Tuition / 授業料
Degree Students 正規生	Undergraduate Students / 学部生	17,000	282,000	535,800 (per year)
	Graduate Students / 大学院生	30,000		
	Law School Students / 法科大学院生	30,000	282,000	804,000 (per year)
	Accounting School Students / 会計大学院生	30,000	282,000	589,300 (per year)
Non-degree Students 非正規生	Research Students / 研究生	9,800	84,600	29,700 (per month)
	Special Research Students / 特別研究学生	-	-	29,700 (per month)
	Credited Auditors / 科目等履修生	9,800	28,200	14,800 (per credit)
	Special Auditing Students / 特別聴講学生	-	-	14,800 (per credit)

※ 検定料、入学料、授業料は変更になることがあります。Above fees are subject to change.

※ 再入学・転入学及び編入学の場合、30,000円。 30,000 yen in case of re-admission, transference, transfer admission.

Fee Waivers 入学料・授業料免除

Degree students who find it difficult to pay the admission fee and/or tuition for economic reasons may be granted a waiver on application and screening.

* Non-degree students are not eligible for the waivers.

正規課程在籍(予定)者が、経済的事由等により、入学料及び授業料の納付が困難である場合に、申請により選考の上、免除が許可される場合があります。授業料免除の申請は、毎学期審査が必要です。
*非正規生は、免除の対象ではありません。

	Full	Half	1/3	Application Period	Result Notification
Admission Fee	○	○	—		
Tuition: Spring Semester	○	○	○	February - March	Mid-July
Tuition: Fall Semester	○	○	○	August - September	Mid-December

Living Expenses 生活費

The cost of rent and living is cheaper compared to other major Japanese cities. Monthly living expenses are around 110,000 yen, which is relatively low for Japan, making it a very livable city.

仙台での生活費の目安は月額11万円と全国平均よりも安く、暮らしやすい都市と言えます。

Average Monthly Living Cost by Region

地域別平均生活費/月



Approximate Monthly Living Expenses for Students

一般的な学生の1ヵ月の生活費(目安)

Rent 家賃	Student Dormitory: 10,000 yen to 30,000 yen/month Private Accommodations: 35,000 yen to 55,000 yen/month 学生寮: 約1-3万円/月 アパート: 約3.5-5.5万円/月
Utilities 水道光熱費	Electricity, gas, water etc: Approx. 10,000 yen/month 電気・ガス・水道など: 約1万円/月
Landline Phone 電話代	2,000 yen/month + usage fees 基本料金約2,000円 + 通話料/月
Food 食費	40,000 yen to 50,000 yen/month 4-5万円/月

Source: Lifestyle Survey of Privately Financed International Students 2015, Japan Student Services Organization (JASSO)
出典: JASSO平成27年度私費外国人留学生生活実態調査

Housing 住居・寮

International students are provided housing in dormitories, such as the Tohoku University International House and University House.

Tohoku University provides international students with various types of housing support to help them find suitable housing relatively easily.

Housing costs vary depending on location and other conditions.

東北大学では、留学生に対してさまざまなハウジングサポートを行っていますので、自分に合った宿舎を安心して探すことができます。住居費は、地域差その他の条件により異なりますが、およそ次のとおりです。

		Eligibility		Rent* per month	Maintenance Fee per month	Deposit	Duration
Room Type		Undergrad	Grad				
International House							
Sanjo I	Single	○	○	13,000	1,000	30,000	6-12 months
	Couple	○	○	21,000			
	Family	○	○	25,000			
Sanjo II	Single	○	○	22,800	1,000	30,000	6-12 months
	Couple	○	○	32,000			
	Family	○	○	50,000			
Higashi Sendai	Single	○	○	10,000	1,000	30,000	6-12 months
	Single	○	○	22,000			
	Couple	○	○	33,000			
University House							
Sanjo	Single A	○		21,600**	2,500	30,000	6-12 months
	Single B		○	22,000**	3,100		
Sanjo II	Single	○	○	22,000**	2,500	30,000	6-12 months
Sanjo III	Single	○	○	22,000**	1,500		
Nagamachi	Single	○	○	22,000**	1,500	30,000	6-12 months
Katahira	Single		○	25,000**	1,000		
Aobayama***	Single	○	○	28,000	1,500		6-24 months

*水道光熱費は含まれません。Utilities such as electricity, water, and gas are not included.

**2019年4月よりユニバーシティ・ハウスの寄居量が改定されます。From April 2019 onward, the above accommodation fees for University House will be applied.

***ユニバーシティ・ハウス青葉山は2018年10月にオープンします。University House Aobayama will open in October 2018.

Private apartment

		(in Japanese yen)			
		Rent per month	Maintenance Fee	Utilities	Deposit/Key money
Private apartment	Single Approx. 30,000-60,000		★	★	★

*物件によりさまざまです。契約手数料・仲介料がかかる場合もあります。Fees vary depending on the apartment. The real estate agent might charge handling or mediation fees.

Tutor System チューター制度

Newly enrolled international students are provided tutors, recruited from the Tohoku University student body, to advise them on their studies and daily lives and help them adjust to their new environment as quickly as possible.

入学当初の留学生に対して、東北大学の学生がチューターとなり、学習上のことや、日常生活上の助言を行い、1日も早く新しい環境に慣れるための制度です。

Financial Aid

奨学金

A variety of scholarship opportunities are offered to international students at Tohoku university. Most scholarships accept applications from students already enrolled, but some scholarships are awarded before admission.

外国人留学生を対象とした多様な奨学金制度があります。入学後の申請が一般的ですが、入学前に決定する場合もあります。

Japanese Government (MEXT) Scholarship

<http://www.studyjapan.go.jp/en/toj/toj0302e.html>

There are three ways to apply for the Japanese Government (Ministry of Education, Culture, Sports, Science and Technology; MEXT) Scholarship. Once selected, awardees benefit from fee waivers and a monthly stipend*1 until the stipulated period*2.

- *1. 147,000 yen for doctoral students at Tohoku University (as of the year 2015)
- *2. Years usually required to complete the program (e.g. 2 years for master course)

Applying from outside of Japan before Admission

1. Embassy Recommendation

You apply for a scholarship through an embassy or consulate general of Japan in your country or region of residence, take a primary screening, and then choose the universities you wish to enter. Admission can be in April or October.

2. University Recommendation

You apply for the scholarship through Tohoku University as a prospective applicant for admission. Admission under this scheme is only in October.

Applying from within Japan after Admission

3. Domestic Selection

You can apply for the scholarship as an international self-financed student after admission.

日本政府(文部科学省)奨学金

国費外国人留学生(文部科学省奨学金)へは、次の3つの応募方法があります。採用者は、標準修了年限*2まで授業料等免除及び奨学金の給付*1を受けることができます。

- *1. 博士後期課程147,000円/月(2015年度現在) 他在籍課程等により異なる。
- *2. 課程を修了するのに通常必要とされる年数 (例; 博士前期課程の場合、入学から2年間)

海外から応募する場合

1. 大使館推薦

居住する国・地域の公館へ申請し、一次審査通過後に入学する大学を選択します。入学前に半年間の日本語課程を受けるのが一般的です。入学時期は4月と10月から選べます。

2. 大学推薦

出願予定者として、東北大学を通じて申請します。入学時期は10月です。

日本から応募する場合

3. 国内採用

入学後に、私費外国人留学生として東北大学を通じて申請します。採用期間は4月からです。

Monbukagakusho Honors Scholarship

http://www.jasso.go.jp/en/study_j/scholarships/index.html

Self-financed international students can apply for the Monbukagakusho Honors Scholarship offered by the Japanese Student Services Organization (JASSO) through Tohoku University. Once selected, awardees benefit from monthly stipends (48,000 yen) for up to 12 months.

文部科学省外国人留学生学習奨励費 (留学生受け入れ促進プログラム)

私費外国人留学生が東北大学を通じて申請し、採用されると(独)日本学生支援機構(JASSO)から、最長12ヶ月間奨学金(48,000円/月)が給付されます。

Tohoku University President Fellowship

This scholarship system is unique to Tohoku University. It provides an amount covering tuition fees for international students of excellent character and academic standing. For application information, students should inquire with their desired faculty or graduate school.

東北大学外国人留学生総長特別奨学生

東北大学独自の奨学生制度で、人物、学業ともに優れた外国人留学生に対し、授業料相当額を支給します。

Other Scholarships

http://www.jasso.go.jp/en/study_j/scholarships/index.html

Some private foundations or other organizations in Japan offer scholarships for international students. These scholarships vary with regards to recruitment procedures, eligible fields of study and amount.

その他の奨学金

民間財団等の奨学金制度は、募集、対象者・分野、金額、期間等はそれぞれ異なるため、個別に確認が必要です。

Student Organizations

学生による留学生の支援団体

International support organizations are active at Tohoku University, so there are numerous international exchange activities on campus. International students can deepen their interaction with Japanese students through various international exchange events held at the university.

学生による国際交流

東北大学では、留学生を支援する団体が活発に活動し、キャンパスでの国際交流もさかんです。学内で開催される様々な国際交流行事を通じて、日本人学生と交流を深めることができます。

TUFSA (Tohoku University Foreign Students Association)

This is the main organization for international students at Tohoku University, consisting of students from Asia, Europe and South/North America. It has a long history, having been founded in 1965. Shortly, it will celebrate its 50th anniversary. This organization also holds a long-running international festival each year. This event, which attracts over 3,000 visitors every year, is one of the Tohoku area's largest international events. It also holds exchange trips, welcome parties, dances and sports competitions.

40年以上の歴史ある国際まつりを毎年主催。毎年3,000人以上が来客するお祭りは、東北地方で最も大きな国際イベントの一つです。交流旅行、歓迎会パーティ、ダンスパーティ、スポーツ大会なども開催しています。

<http://www.tufsa.net/>



TUMCA (Tohoku University Muslim Cultural Association)

This association promotes cultural exchange and friendship with Japanese people. It participates in the Tohoku University International Festival and Sendai World Festa every year. It also enables international exchange by holding a cooking class each month.

文化交流や日本人との交友関係を促進しています。東北大学国際祭りや仙台地球フェスタに毎年参加。国際交流ができる料理教室を毎月開催しています。

<https://www.facebook.com/TUMCA>



IPLANET

This organization supports exchange students in the International Program in Liberal Arts (IPLA). They plan special events such as cooking classes, cultural experiences, and welcome and farewell parties. They also organize the Global Café, in which IPLA students teach their native languages and cultures. Many members assist IPLA students as tutors in various matters from study to daily life.

人文・社会科学短期留学生受入プログラム(IPLA)の学生を支援しています。料理教室、日本文化体験、歓迎会やお別れ会といったイベントの企画から、グローバル・カフェの運営や学習や生活を援助するチューターなども行っています。

<https://www.facebook.com/iplanet.tohoku/>



@home

This organization is operated by Japanese students and conducts exchange activities between Japanese and international students. It cooperates with the International Hour exchange parties for international and Japanese students and in helping international students start their lives in Sendai while participating in planning activities.

日本人学生が運営する団体で、留学生と日本人学生が交流できるような活動を行っています。留学生と日本人の交流パーティ「IH」や留学生の仙台での生活スタートをお手伝いするなど協力し合いながら企画をしています。

<http://www.insc.tohoku.ac.jp/~athome/>



Contact Information

連絡先一覧

Faculty, Research Institute, etc.	E-mail	Phone	Campus
Student Exchange Division	Inbound Exchange Program	studyab@grp.tohoku.ac.jp	Kawauchi
	FGL Programs	fgl-tohoku@grp.tohoku.ac.jp	Kawauchi
	International Support Office	supportoffice@grp.tohoku.ac.jp	Kawauchi
Faculty of Arts and Letters	art-kyom@grp.tohoku.ac.jp	+81-22-795-6005	Kawauchi
Faculty of Education	sed-kyomu@grp.tohoku.ac.jp	+81-22-795-6105	Kawauchi
School of Law	law-kyom@grp.tohoku.ac.jp	+81-22-795-6249 (FAX)	Kawauchi
Faculty of Economics	eco-kyom@grp.tohoku.ac.jp	+81-22-795-6265	Kawauchi
Faculty of Science	sci-kyom@grp.tohoku.ac.jp	+81-22-795-5829	Aobayama
School of Medicine	Medical Sciences	med-kyom@grp.tohoku.ac.jp	Seiryō
	Health Sciences	cms-kyom@grp.tohoku.ac.jp	Seiryō
School of Dentistry	den-kyom@grp.tohoku.ac.jp	+81-22-717-8248	Seiryō
Faculty of Pharmaceutical Sciences	kyoumu@mail.pharm.tohoku.ac.jp	+81-22-795-6803	Aobayama
School of Engineering	eng-kyom@grp.tohoku.ac.jp	+81-22-795-5818	Aobayama
Faculty of Agriculture	agr-kyom@grp.tohoku.ac.jp	+81-22-757-4007	Aobayama
Graduate School of Arts and Letters	art-kyom@grp.tohoku.ac.jp	+81-22-795-6005	Kawauchi
Graduate School of Education	sed-kyomu@grp.tohoku.ac.jp	+81-22-795-6105	Kawauchi
Graduate School of Law	law-kyom@grp.tohoku.ac.jp	+81-22-795-6249 (FAX)	Kawauchi
Graduate School of Economics and Management	eco-kyom@grp.tohoku.ac.jp	+81-22-795-6265	Kawauchi
Graduate School of Science	sci-in@grp.tohoku.ac.jp	+81-22-795-5829	Aobayama
Graduate School of Medicine	m-daigakuin@grp.tohoku.ac.jp	+81-22-717-8010	Seiryō
Graduate School of Dentistry	international@dent.tohoku.ac.jp	+81-22-717-8248	Seiryō
Graduate School of Pharmaceutical Sciences	kyoumu@mail.pharm.tohoku.ac.jp	+81-22-795-6803	Aobayama
Graduate School of Engineering	eng-in@grp.tohoku.ac.jp	+81-22-795-5820	Aobayama
Graduate School of Agricultural Science	agr-kyom@grp.tohoku.ac.jp	+81-22-757-4007	Aobayama
Graduate School of International Cultural Studies	int-kkdk@grp.tohoku.ac.jp	+81-22-795-7556	Kawauchi
Graduate School of Information Sciences	is-kyom@grp.tohoku.ac.jp	+81-22-795-5814	Aobayama
Graduate School of Life Sciences	lif-kyom@grp.tohoku.ac.jp	+81-22-217-5706	Katahira
Graduate School of Environmental Studies	kankyo.kyomu@grp.tohoku.ac.jp	+81-22-752-2235	Aobayama
Graduate School of Biomedical Engineering	bme-kyom@grp.tohoku.ac.jp	+81-22-795-4824	Aobayama
Law School	law-pro@grp.tohoku.ac.jp	+81-22-217-4947 (FAX)	Katahira
School of Public Policy	law-pro@grp.tohoku.ac.jp	+81-22-217-4947 (FAX)	Katahira
Accounting School	as-jimu@grp.tohoku.ac.jp	+81-22-217-6276	Katahira
Institute for Materials Research (IMR)	imr-som@imr.tohoku.ac.jp	+81-22-215-2181	Katahira
Institute of Development, Aging and Cancer	ida-som@grp.tohoku.ac.jp	+81-22-717-8443	Seiryō
Institute of Fluid Science	shomu@ifs.tohoku.ac.jp	+81-22-217-5302	Katahira
Research Institute of Electrical Communication	somu@riec.tohoku.ac.jp	+81-22-217-5420	Katahira
Institute of Multidisciplinary Research for Advanced Materials	tagen-kenkyo@grp.tohoku.ac.jp	+81-22-217-5208	Katahira
International Research Institute of Disaster Science	irides-syomu@grp.tohoku.ac.jp	+81-22-752-2011	Aobayama
Cyclotron and Radioisotope Center	cyric-jim@grp.tohoku.ac.jp	+81-22-795-7800	Aobayama
Advanced Institute for Materials Research	aimr-soumu@grp.tohoku.ac.jp	+81-22-217-5922	Katahira
Admission Division (Undergraduate Program in Japanese)	nyushi4@grp.tohoku.ac.jp	+81-22-795-4807	Kawauchi

Campuses

キャンパス

Located on four campuses in the city of Sendai, the university is comprised of 10 undergraduate faculties, 15 graduate schools, 6 research institutes, 14 research centers and the University Hospital.

東北大学には、仙台市内に4つのキャンパスがあります。10学部、15研究科、6附置研究所、14研究センター等、及び大学病院から成り立っています。



Katahira Campus 片平キャンパス
Administrative Units, Research Institutes



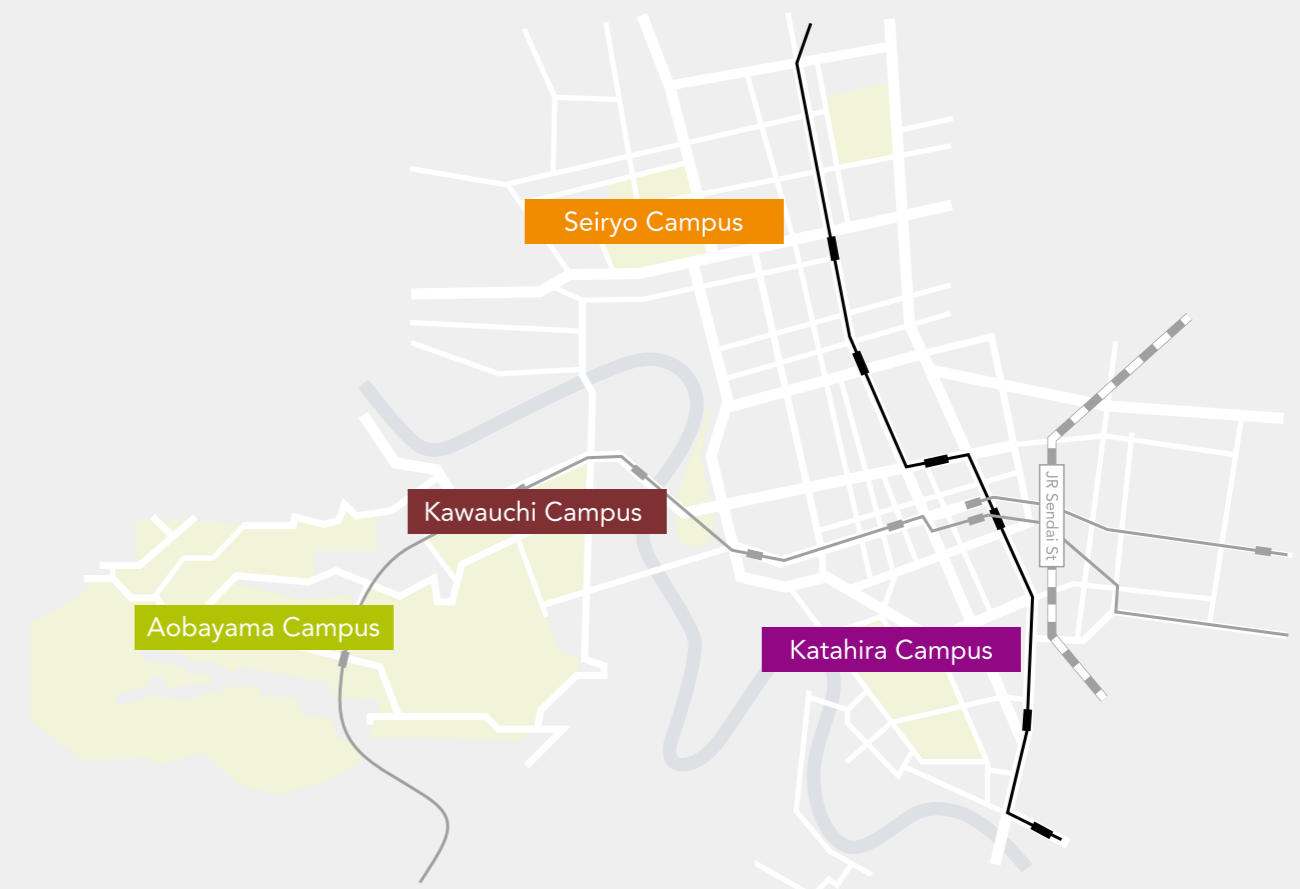
Kawauchi Campus 川内キャンパス
Humanities and Social Sciences,
First Two-Year Undergraduate Education



Aobayama Campus 青葉山キャンパス
Science, Engineering and Agriculture



Seiryō Campus 星陵キャンパス
School of Medicine, Dentistry, University Hospital,
Tohoku Medical Megabank Organization



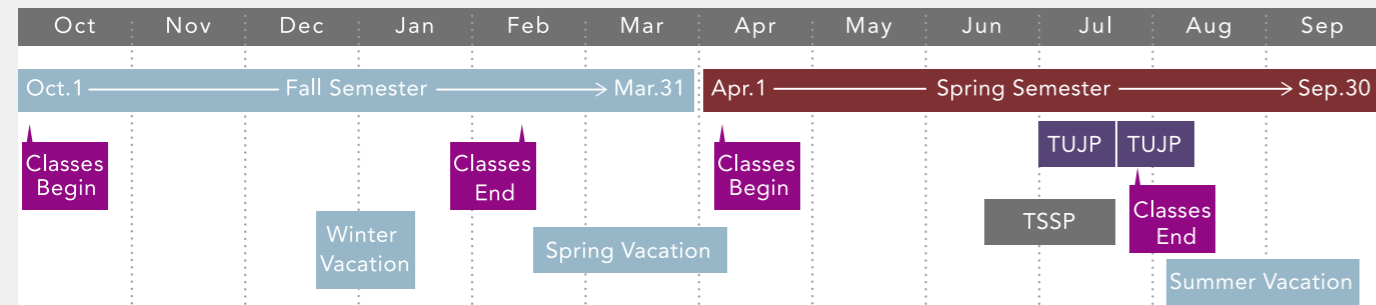
Tohoku University on the Map



Academic Calendar

学年曆

Academic Calendar 2018/2019



Entrance Ceremony	Early October
Special Orientation for New International Students	October
Winter Vacation	December 27—January 3
Semester End Vacation	Early February
Commencement	End of March / End of September
Entrance Ceremony	Early April
Special Orientation for New International Students	April
University Foundation Day	June 22
Semester End Vacation	Early August-September

National Holidays

Health and Sports Day	October 8
Culture Day	November 3
Labor Thanksgiving Day	November 23
Emperor's Birthday	December 23
New Year's Day	January 1
Coming of Age Day	January 14
National Foundation Memorial Day	February 11
Vernal Equinox Day	March 21
Showa Day	April 29
Constitution Memorial Day	May 3
Greenery Day	May 4
Children's Day	May 5
Marine Day	July 15
Mountain Day	August 11
Respect for the Aged Day	September 16
Autumnal Equinox Day	September 23

